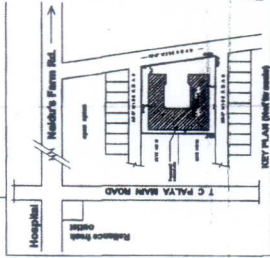


SCHEDULE OF OPENINGS

M1	- MAIN DOOR	- 8'-0" X 7'-0"
D1	- DOOR	- 4'-0" X 7'-0"
D2	- DOOR	- 3'-0" X 7'-0"
W1	- WINDOW	- 7'-0" X 4'-0"
W2	- WINDOW	- 6'-0" X 4'-0"
W3	- WINDOW	- 6'-0" X 4'-0"
W4	- WINDOW	- 4'-0" X 4'-0"
V	- VENTILATOR	- 3'-0" X 3'-0"
V1	- VENTILATOR	- 2'-6" X 3'-0"

SITE AREA
= 9,750.00 sq.ft.

PURITY AREA:
GROUND FLOOR = 4,465.00 sq.ft.
FIRST FLOOR = 4,465.00 sq.ft.
SECOND FLOOR = 4,465.00 sq.ft.
TERRACE = 300.00 sq.ft.
TOTAL
= 14,540.00 sq.ft.



SANCTIONING AUTHORITY

SIGNATURE OF OWNER:

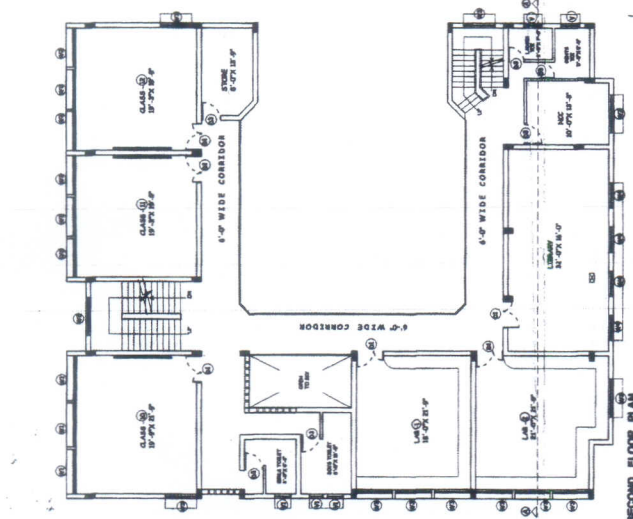
For **B.M.E. TRUST (REGD)**

Authorized Signatories

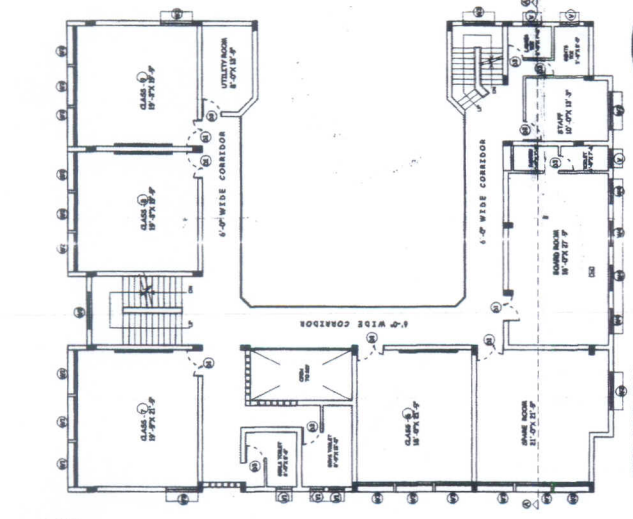
ARCHITECTS SIGNATURE:

REG. NO.: P.I.A., P.I.S.E., ALL.I.D., P.I.S.L.Z.
REG. NO. : D.C.C. 268 2-30-2005-279

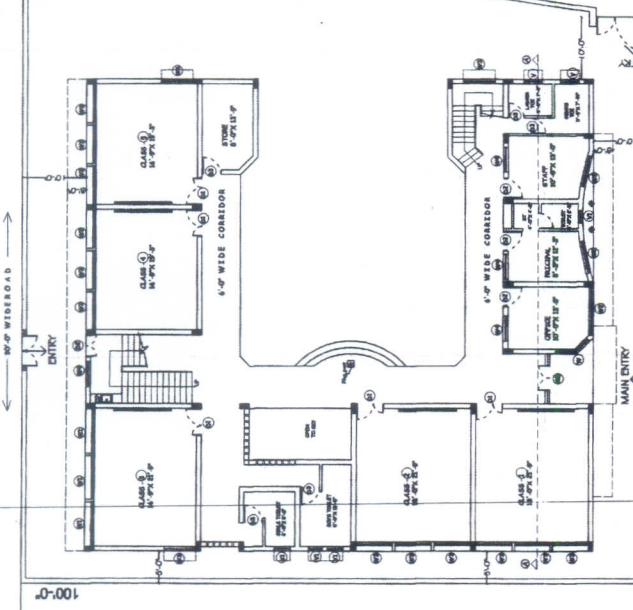
PROPOSED SCHOOL BUILDING
EDUCATIONAL TRUST
SITE NOS 20, 21, 22, 23, 24 & 25
AVALAHALLI, T.P. PALVA, DISTRICT MYSURU
THIMATHI ENGINEERS
ARCHITECTS & ENGINEERS
COTTAGE - A THE PALACE
BANGALORE - 560052
PHONE: 886030000



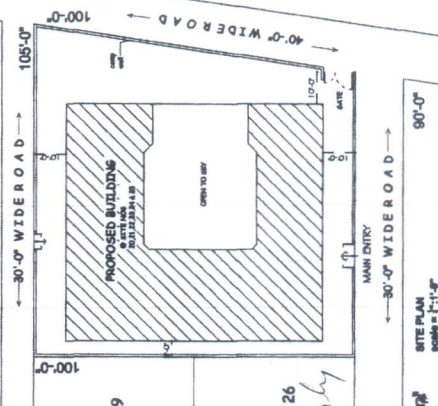
SECOND FLOOR PLAN



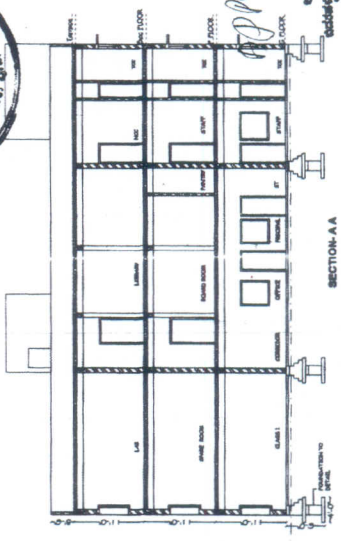
FIRST FLOOR PLAN



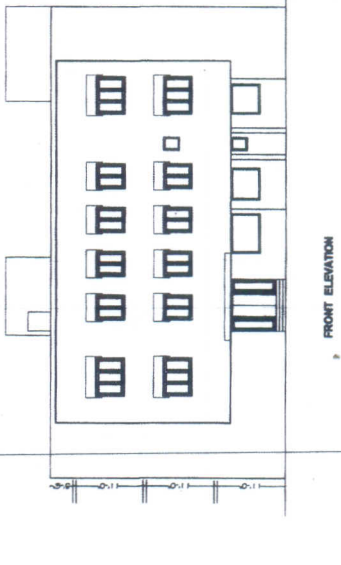
GROUND FLOOR PLAN



SITE PLAN
Scale = 1/4" = 1'-0"



SECTION-AA



FRONT ELEVATION



Approved the job
THIMATHI ENGINEERS
BANGALORE
MOBILE: 9880300000
9880300000